



**CHAIRMAN:**

RON WANMER 01323 840346

**VICE CHAIRMAN:**

JOHN GIBBONS 01323 502201

**SECRETARY:**

JOHN BISHOP 01323 843202

**TREASURER:**

RON SHRUBB 01323 767429

**MEMBERSHIP SECRETARY:**

ROBERT COOPER 01323 507135

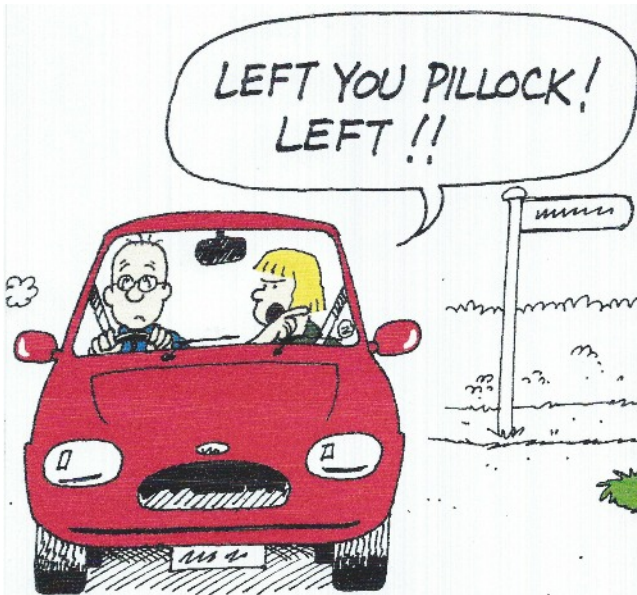
**ADVERTISEMENT SECRETARY**

CHRIS HONE 01424 772682

**NEWSLETTER EDITOR:**

ANDY BINFIELD 01323 761119  
(andybin@sky.com)

<http://www.hooeoldmotorclub.org.uk/>



TERRANCE WASN'T REALLY SURPRISED TO DISCOVER THAT HIS NEW CAR HAD THE SAME NAVIGATION SYSTEM AS THE OLD ONE.

November News 2015



It's a boring thought yet again, but where has the time gone? it is now into autumn already. It's only September, I rarely go shopping but the other day we went into ESK and they are putting up the Christmas trees and all the cheap and not so cheap goodies that go with it.

To start off. The BBQ this year was held at Chris and Ann's farm in Marley lane with 50 plus people attending and by all the reports everyone had a great time, plus also enjoyed the gardens that Chris is rather an expert in maintaining and growing a large variety of vegetables and flowers etc. Well done Chris and Ann and to the ladies that pitched in and helped on the day. Unfortunately on this occasion I was unable to make it, the good news is that Chris and Ann have volunteered to do it all again next year.

Next major event for the club was the annual show, not forgetting our son Colin giving us a look into the rare sights and sounds that China has to offer and the bits that the tourists never see in the second half of the briefing evening. Thank you to everyone that turned up on the Saturday morning, they say many hands make light work and so it was with almost everything complete and set up by 12pm.

Sunday was a bright and sunny day which in fact got so hot I was seriously beginning to struggle with the heat and my back etc, and sadly I was rather pleased to see the finish on this occasion. I never got round to see everything, but what a show we had. We have received numerous reports of how enjoyable it was and the usual "I will be back next year", "best car show in the southeast" and so it goes on. We even received credit from France, (See other report).

A sincere thank you to all those that gave their time and support. The show is a credit to the Hooe club and as with any show there are those that work their socks off. A special thank you those that really do work very hard. We all know who they are and without their dedication we would struggle to cope.

We do not go all out to make a fantastic amount of money, but we have been very fortunate to have very good weather for a good few years and the result this year again was a fantastic £6,000 although Ron S is yet to confirm the final figure.

I am very grateful to the members who entered the Lady and Vehicle concours it was very nice to see David Hance - an old member coming back on the scene, with his 1934 Bedford all suitably dressed with his partner.

(A winner to my eyes,) not forgetting and worth a mention, Terrance and Pauline in the hilarious 1960's Peace Hippies. A Big Sincere Thank you,

to all those who made the effort, It was all very much appreciated by everyone and so important to the show.

September, was Fish and Chip night, 45 people attended this event. Any slimming went well out of the window, it was the largest Fish and Chips around I guess.

October, we were entertained by Terry Blackman with a large selection of transport photographs from his collection and taken by Terry at local shows over the years. We have a good selection of events coming for the New Year, see the future events column and make sure to book early as some are filling already. There will be a change of venue for the annual dinner this year. (see Future events).

A quick look round the shows we attended.

Bodiam, a very warm day with a very large vehicle content, including very large car club support. We took the Cresta to Middle Farm, at the entrance I was asked to pay £10 to show my car. Why should I want to pay £10 to show my car?? so I reversed out. It's back to the old point I have said many times, they would not have a show if we did not support it. This has been my opinion for many years unless it is for a charity I consider to be worth it.

So we went to the show at Langley sports club which was a very pleasant show run by my old friend Bob King; there was a good selection of cars and motor cycles and a nice laid back atmosphere prevailed.

**Appledore**, I had not been for a few years, this show has improved in size and now taken over the next field as well. There was a good range of cars supporting this event mainly coming from the east of Kent and Essex with a fairly good auto jumble as well.

The **Ringmer** show was washed out on the Sunday, we took the Bedford so was able to relax in reasonable comfort. You have to feel sorry for them with such bad weather after all the work to put it on then see it all ruined, I have been there myself on a number of occasions in the FOT days.

**The Festival of Transport** how unlucky can you get with an incorrect weather forecast putting people off, and Monday that simply was a complete wash out for the second year running. With a week to prepare and dismantle, resulting in a tremendous amount of work by many people they do really deserve better.

Everything had to be towed out with a good number of tractors doing a great job. The very large Scammells and the like, were coming into their own winching the steam engines out to the road and proving what a fantastic bit of kit they are even after seventy years old plus, it was an education just to watch them operating operate with very little effort.

A very HAPPY CHRISTMAS and NEW YEAR to everyone and of course Happy Vintage Motoring for 2016.

*Ron W*

A VOLUNTEER IS REQUIRED FOR A SMALL BUT IMPORTANT JOB, to do with the show Programme, ie; selling Programme space (already mainly done with usual advertisers) and collecting the money Contact John Bishop (sec) or Ron Wanmer, or any committee member.

George Griffin after 14 Years in the position, has now retired from show steward for CLASSES A & B This post will be taken over by Colin Lake.

Here's an idea for those of you who have an old tractor sitting around in the back garden that you don't know what to do with!



# FUTURE EVENTS

December 4th

Party Time. Start 7pm Any goodies welcome to help out

## 2016

January 10th

Coach trip to the Milestone's museum at Basingstoke. More details on our web site. Those interested please contact John Bishop - tel 01323 843202

February 5th

Talk by Trevor Weeks of the East Sussex Wildlife Rescue and Ambulance Service

March 4th

Film show / presentation by Ron Shrubbs

March 19th

Annual Dinner at Blackstock Farm, Hellingly. Contact Pauline or Terrance on 01323 505454

March 27th

Easter Bonnet Run

April 1st

A.G.M. (Really, - no April fool joke here!)

May 6th

Run out to Seaford Museum which is in the Seaford Martello Tower.

June 3rd

Race Night (T.B.C)

July 1st

**B.B.Q.** at Marwin Farm, Marley Lane, Battle TN33 0RE

August 5th

Final Show Briefing

August 6th

Set up on Show Field, All hands to Battle Stations.

August 7th

ShowTime

September 2nd

Fish and Chip run

October 7th

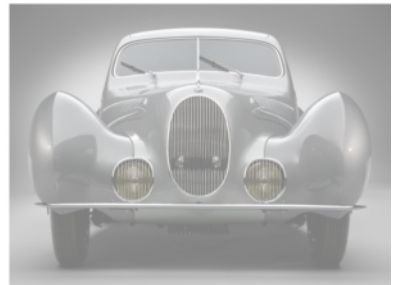
T.B.A.

November 4th

Film Show

December 2nd

Party



Identify the car and win

## 2015 Show Report (PROVISIONAL)

<u>INCOME</u>		<u>EXPENDITURE</u>	
ADVERTS	590.00	STORAGE	260.00
ICE-CREAM VAN	300.00	PUBLICITY	616.00
BURGER VAN	300.00	ENTRY FORMS, STAMPS, PRINTING ETC	726.04
STALLS	556.00	BAND	100.00
TOMBOLA STALL	295.00	PROGRAMMES	890.00
LATE ENTRIES	335.00	INSURANCE	230.00
BISHOP CALWAY INSURANCE	200.00	TROPHIES	81.98
HANKHAM MOTORS	200.00	HOOE P/C FIELD	150.00
SHOW FLOAT	815.00	CAR PARK FIELD	150.00
GATE NET	7630.00	RED CROSS	211.20
PLAQUE SALES	1.00	P.A. SYSTEM	100.00
BACK GATE	80.00	PLAQUES	312.00
		R.W. EXPENSES	60.00
		R.S. EXPENSES	40.09
		TOILETS	474.00
		SHOW EXPENSES	249.76
		SHOW FLOAT	665.00
<b>INCOME</b>	11302.00	WEB SITE	187.92
<b>EXPENDITURE</b>	5503.89	<b>EXPENDITURE</b>	5503.89
<b><u>SHOW PROFIT</u></b>	<b><u>5798.11</u></b>		

FRENCH ACCOUNT OF THE 46th HOOE SHOW

*(From our overseas correspondent in Bordeaux)*

Bonjour Mr. Wanmer!

A warm hello from Bordeaux. I don't know if you remember us, we were the "family" of three sitting next to your commentary tent at the Hooe's vintage car show this year and we spoke afterwards telling you how much we love the show, that we'd come from Bordeaux for it and you very kindly gave us three "badges" of the show and invited us to write something about it for the newsletter. Attached you will find our "commentary"! I do hope it meets with your approval.

kind regards,

Isobel Duprat, Denis Duprat, Zoé Duprat (our daughter 7yrs!!)

It's the first Sunday of August : The long awaited day has arrived. Alarms for 7am were set the night before, car packed up with all the necessary paraphernalia, check-lists checked, timing kept to. We arrive at the 46th Vintage Hooe Car Show on a bright, sunny morning, the first on the field to stake our pitch. Every year it's the same ritual; every year we come to, for us, the grail of all car shows; all the way from BORDEAUX, FRANCE. We first « stumbled » upon the show four years ago, quite by chance. Since that first encounter we have made the pilgrimage every year, specially from France. Avid classic car lovers, Hooe V.C.S is for us, quite simply, the most enjoyable and best of its kind. The meet, venue, organisation and incredible turnout of exceptional cars is incomparable. Good humour is mixed with expert commentary, all proceeds are for charity and entrance fee is kept to a minimum. Ron and his team make a year's hard work and organisation seem effortless and his daughter Angela is a great commentator for the ever popular « concours d'élégance ». Our dream is to one day arrive at the show in our own little treasure all the way from France.....Le rêve !! Vive l'année prochaine !!! *(The dream !! Vive next year)*

Q: How many footballers does it take to change a lightbulb ?

A: 11- One to put the bulb in, 10 to kiss him afterwards,

Q: How many Local Government Officials does it take to change a light bulb?

A: Fifty, one to change the light bulb and 49 to carry out a fact finding mission to Barbados to see how they change light bulbs there.



#### Hooe Car Club BBQ – July 2015

The BBQ this year was held at Chris Hone's house at Marley Lane, Battle on the 4<sup>th</sup> July whereupon it was noticed straight away we did not even have the 'Stars & Stripes' flag flying!

The venue and the date was a departure from the norm whereby previous events have been held on the Friday evening at our Chairman's house in Hailsham so this was enough to confuse members. Chris had the foresight to put the club flag outside his drive; albeit if members were like me, they went straight past thinking, 'I'm sure that was the club flag!'

The weather was perfect and both Anne and Chris were perfect hosts for the goodly number of members. The only downside was the fact Ron Wanmer was unable to be there owing to wedding commitments nevertheless Jean was there making for an acceptable stand in – only joking Ron! Hopefully the photograph does the day justice and look forward to 2016.

John Bishop/Secretary

---

**Any articles, pictures or suggestions for Newsletter content will be gratefully received; - contact Andy (details on front page)**



Update from the 'Where are they now' features  
in the March and July newsletters.

Dear Chris (*Hone*)

Thank you for entertaining me yesterday evening and for showing me a copy of the Hooe Motor Club's March 2015 newsletter. Having served a 5 year engineering apprenticeship with Morris Commercial Cars Ltd. in Birmingham, I was rather irritated, as you know, when I noted that a photo of a Morris-Commercial C/8 'Quad', shown in the newsletter, was described as Chevrolet Quad! Attached is an article that appeared in the Spring 2002 edition of 'Windscreens', the magazine of the Military Vehicle Trust, which gives information about Morris-Commercial C/8 Quads and Morris-Commercial C9/B Bofors Quads, which may be interest.

A large number of Morris-Commercial C/8 'Quads' and C9/B Bofors Quads were supplied to the military for use during and after WWII. When these vehicles became surplus, they were sold off and then, in private hands, used for other purposes. During the 1960s, Vicarys acquired a Morris-Commercial C/8 'Quad' and converted it into a recovery truck. I recall that although it had no great speed, it was a 'slogger' with alot of pull especially when 1st gear, which was a crawler gear, of the 5 speed gearbox was engaged. It also had a useful winch, driven from the PTO, and with its 4 wheel drive and articulated chassis it was very good off road and in snowy conditions. Having given good service for many years, the C/8 was disposed of during the 1970s and was replaced by an ex military 6x6 Scammell Explorer.

Regards  
Peter (*Seymour*)



*Editor's note-* The 'article' referred to above, I found to be so interesting that I have posted it in full on the website 'Articles' page; as even with the extra pages in this issue, there is insufficient space to show it in the necessary detail.

## The Dead Duck

A woman brought a very limp duck into a Veterinary Surgeons practice. As she laid her pet on the table, the vet pulled out his stethoscope and listened to the bird's chest. After a moment or two, the vet shook his head and sadly said, "I'm sorry, your duck, Cuddles, has passed away".

The distressed woman wailed, "Are you sure?" "Yes, I am sure. Your duck is dead," replied the vet.

"How can you be so sure?" she protested. "I mean you haven't done any testing on him or anything. He might just be in a coma or something."

The vet rolled his eyes, turned around and left the room. He returned a few minutes later with a black Labrador Retriever. As the duck's owner looked on in amazement, the dog stood on his hind legs, put his front paws on the examination table and sniffed the duck from top to bottom. He then looked up at the vet with sad eyes and shook his head. The vet patted the dog on the head and took it out of the room.

A few minutes later he returned with a cat. The cat jumped on the table and also delicately sniffed the bird from head to foot. The cat sat back on its haunches, shook his head, meowed softly and strolled out of the room.

The vet looked at the woman and said, "I'm sorry, but as I said, this is most definitely, 100% certifiably, a dead duck."

The vet turned to his computer, hit a few keys and produced a bill, which he handed to the woman. The duck's owner, still in shock, took the bill, "£150!" she cried, "£150 just to tell me my duck is dead!"

The vet shrugged, "I'm sorry, but if you had just taken my word for it, the bill would have been £20, but the Lab Report was an additional £70 and the Cat Scan was another £60.

**YOU KNOW  
YOU'RE IN  
TROUBLE**



Subject: 4 s/h WW tyres 18" rims x 550  
4 only White Wall vintage tyres, 525/550 18", 4 ply.

These 4 tyres I replaced this year, but they would be OK for spares, so seems a pity to dump them. Maybe someone could make use of them, perhaps in exchange for a donation to a local charity?  
complete with inner tubes

Came off my 1932 Chevy, also suitable for other late 20's early 30's American cars, Ford Model A, Plymouth etc.

One pair have plenty of tread but crazed white walls, about 3" wide, the other pair have good 3 1/4" white walls but not much tread, see photos.  
They all need a scrub with Vim and soap.

I would guess they are 10 to 15+ years old. **THEY ALL LOOK GOOD FROM A DISTANCE!**

Call Bruce on 07798 665 258 Collect in Uckfield.



**More pics** on our website 'Announcements' page

---

Also, - **FOR SALE**

Set of Brand new BUMPER OVERRIDERS from A40 Farina 1959 model with Morris 1000 engine still in original BMC Boxes £40 ono

&

Selection of engineering books etc and various, too good to throw away, Ex Colin's university books etc all in excellent condition.

Tel: 01323 840346

---

Apologies for the quality of the text and images on the next few pages, I had to make photocopies of the originals in order to include as much as was practical.

# The magnificent 1930s aerodrome at Wilmington

and WWII aircraft activity

[Petertyrrell99@gmail.com](mailto:Petertyrrell99@gmail.com)

The existence of the between-the-wars airfield beside the bustling A27 trunk road near Wilmington, in East Sussex, is a matter largely overlooked. The site at TQ536052 alongside the Lewes and Polegate thoroughfare is passed daily by thousands of drivers within 500 yards of the entrance. I first became intrigued in the airfield as a youngster in Brighton, pouring over my parents' Bartholomew linen map, although I never saw aircraft there as the site closed in 1939. I refer to the location as Milton Gate, as titled on the 1930s period map when the airfield functioned. Also Milton Gate relates directly to my Turnpike studies from 1819 when John Loudon McAdam and Sussex County Surveyor William Figg laid the new highway between Lewes county town and what became called Polegate with the last of the turnpike gates. Albeit the road surface by the 1930s would have been basic ground flint or gravel and the volume of traffic just a trickle compared to current pressures when the issue of dualling this part of the A27 is being revived.

The WWI airfield itself was a combination of a pair of fields named Ten Acres and Gate Field according to Arlington's 1843 tithe survey. Today it is part of Long Man Parish. In 1916 the fields had become a Royal Flying Corps Home Defence Landing Ground – reserve, albeit little used. At this time there were military airfields at St Anthony's - Eastbourne, Newhaven, Polegate, Goring-by-Sea, Rustington, Shoreham, Southborne, Tangmere, and Telscombe Cliffs across Sussex - with varying levels of activity at these pioneering aircraft establishments at the time.



*The new Wilmington clubhouse, an Art Deco statement, opened in 1938.*

*Gipsy Moth G-AFFS is parked outside.*

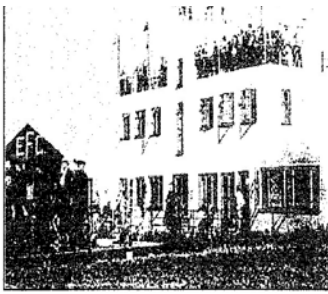
50.82781, 0.18101 ( N50° 49' 40" E000° 10' 51" )



*A Google appreciation of the aerodrome site today.*

Records on this WWI period at Wilmington aerodrome are virtually non-existent and the site was sometimes referred to as Arlington Airfield due to its parish location. In reality there is little on record of aerial activity at the site, nor permanent buildings, until the 1930s. Micro-fiche print outs from the Eastbourne newspapers have provided coverage of events at the aerodrome and the ensuing material is mainly gleaned around these reports.

Today the entrance to the old airfield site is crossed alongside the Wealdway cross-country path. The surviving 1930s property there is a former hangar that was converted into a barn when the site became Milton Gate Farm during the 1970s. A wooden hangar there was blown down in the 1980s, a second wooden hangar was in the original featherboard with a corrugated iron sheet roof. Beyond south is Wilmington Hill.



## The Art Deco clubhouse

Construction of new buildings at TQ5383 520, in the south east corner of the site, began in mid 1937 when the enthusiasm there was at a peak. On 20 August 1938 their imposing new clubhouse and facilities close to the main road were opened by W.P. Hildred OBE, the Deputy Controller of General Civil Aviation. Its architect was Mr. F. Sayer and construction was by W.B. Price of Coventry Road, St Leonards, with a steel girder frame by Rother Iron Works of Rye. The angular property was to a popular Art Deco statement built with flat roof and parapets, all affording a perfect view of the landing area.

The main block was seven bays long and two storeys high with the central bay set forward slightly and with a Control Tower over, two further storeys higher. There were single storey extensions at both ends. The windows were probably steel casements; to the main block in each two lights and with tall slit windows the central bay to the upper storeys, probably lighting the staircase with double doors to the ground floor. The single storey extensions had large windows five lights wide.

The Control Tower was fully glazed, probably in light steel framework. The construction was concrete cased steel framed and all external surfaces were rendered. It may be hard to visualise the interior fittings and unfortunately no specific photos, brochures or information has been found regarding the clubhouse. However they may be compared to the extant Shoreham Airport building that officially opened in 1936. A colleague who visited the part-occupied property at Milton Gate in the mid 1960s suggested that the building was possibly clad in asbestos sheeting. The property at that time was home to Ray Sweet, his wife and daughter. Ray was a jockey for John Hootton, the Wilmington vet and horse trainer. Ray rode for him in a Grand National at Aintree.

By July 1938 the Civil Air Guard Scheme had been launched by Sir Kingsley Wood the Air Minister. Potential pilots enrolling at Eastbourne Labour Exchange were sent to Wilmington aerodrome to assess their capabilities and medical condition. Over 100 recruits were in training by the next year. One airman was Sergeant John Edward Bayley who was born in Eastbourne and learnt to fly at Wilmington Flying Club in 1933. At the outbreak of WWII in September 1939 he was a qualified Volunteer Reserve pilot at Biggin Hill and was posted to 249 Squadron at North Weald.

On 10 October, at the height of the Battle of Britain, his Hurricane V7537 was part of a patrol over the River Thames. At 15.47 hours suddenly his fighter went into a steep dive, dropping from formation. It is thought that he suffered from oxygen failure. He is buried at St Luke's Church, Bromley.

## A memorable event

An estimated 10,000 spectators attended the Eastbourne Flying Club's Air Display on 20 August 1938; the entry of some 100 aircraft and volume of attendance being tantamount to the public's fascination with flying. Although the public were not too distracted, it may have been a relief, by news reports of hostile events escalating across Europe and of ARP and Red Cross activity locally.

**BRITISH HOSPITALS'**  
**AIR PAGEANT**

Under the distinguished Patronage of H.R.H. PRINCE ARTHUR OF CONNAUGHT, K.G.K.T. etc.



**15 STAR PILOTS**  
*Led by*  
*Chas. W.A.*  
**SCOTT**  
*A.F.C.*

**15 AIRCRAFT**  
**20 THRILLING**  
**EVENTS**

For the Princess Alice Memorial Hospital

**Wilmington Aerodrome**  
LEWES ROAD, NR. POLEGATE  
**EASTBOURNE**

Continuous **NOON** till Dusk. Pageants at 2.30 & 6.30  
Admission 1/3 Children 6d Cars 1/-  
**PASSENGER FLIGHTS**

**ONE DAY ONLY**  
**Wednesday**  
**July**  
**19th**

P.T.O.

*A leaflet for the 1938 meeting.*

A round-up of odd, funny and strange!

Real men do it in one trip...



BECAUSE IT WASN'T UGLY ENOUGH...



motorcycle level = Asian

I witnessed the miracle of birth on the way home from work today



this picture was taken in 1916...

